



1 Stubbs Court, Andover, SP10 3QR
Guide Price £240,000



1 Stubbs Court, Andover, Guide Price £240,000

PROPERTY DESCRIPTION BY Mr Dion McArthur

Graham & Co offer to the market, a three bedroom house situated in the popular Artist Way development. The home is being sold with no onward chain.

This property comprises of; entrance hall, downstairs WC, kitchen/diner and spacious lounge. Upstairs houses three bedrooms and a family bathroom.

To the rear of the property, there is a large rear garden with brick built shed and a gate.

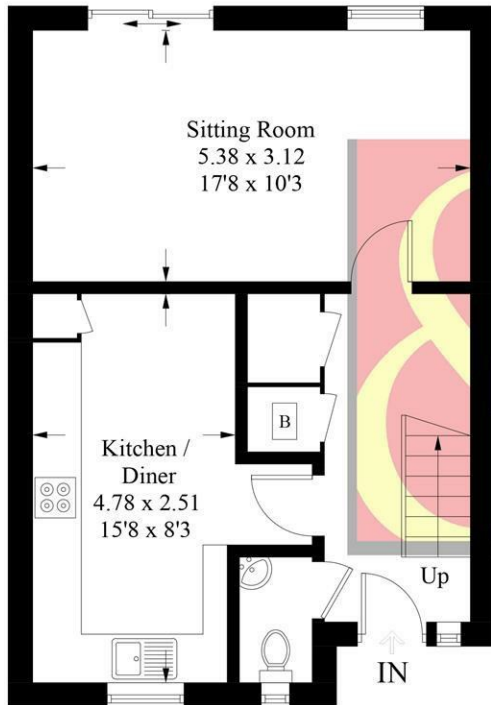




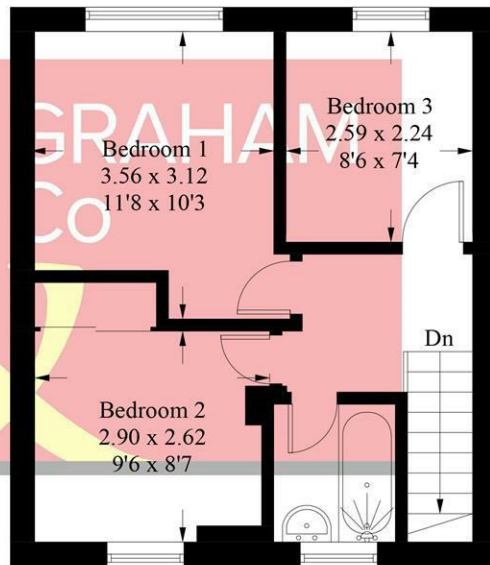
Andover offers a good range of shopping and recreational facilities including a theatre, cinema, new leisure centre, excellent selection of schools and a college for higher education. An abundance of open space and land with a selection of local nature reserve's all within walking distance of the town centre. The town itself boast a lovely "market town" feel and everything you may need is close at hand. The mainline train station offers a fast service to London Waterloo in just over an hour, and the A303 gives access to London via the M3 and the West Country.



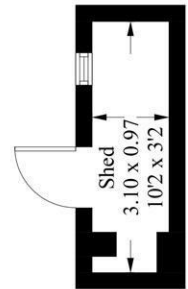
Stubbs Court, SP10
 Approximate Gross Internal Area = 76.4 sq m / 822 sq ft
 Shed = 2.9 sq m / 31 sq ft
 Total = 79.3 sq m / 853 sq ft



Ground Floor



First Floor

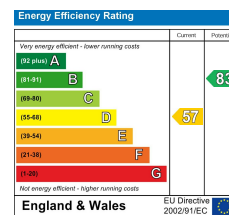


(Not Shown In Actual Location / Orientation)

PRODUCED FOR GRAHAM AND CO

Whilst every attempt has been made to ensure the accuracy of the floorplan, measurements of doors, windows and rooms are approximate. These plans are for representation purposes only as defined by RICS Code of Measuring Practice and used as such by any prospective purchaser. © Emzo Marketing (ID959917)

DIRECTIONS



Tax Band: C



OPEN 7 DAYS

If you are considering selling your home
 please contact us today for your free
 no obligation valuation

01264 356500

IMPORTANT: We would like to inform prospective purchasers that these sales particulars have been prepared as a general guide only. A detailed survey has not been carried out, nor the services, appliances and fittings tested. Room sizes should not be relied upon for furnishing purposes and are approximate. If floor plans are included, they are for guidance only and illustration purposes only and may not be to scale. If there are any important matters likely to affect your decision to buy, please contact us before viewing the property.